

# Digital Mini System Feeder

## Feature-Rich User Friendly Digital Control

- User Defined Pressure Setting (0-45 psig)
  - With adjustable cut-in/cut-out setting
- User Defined Low Pressure Alert
- User Defined High Pressure Alert
- Low Level Alert Output
- LED Warning Indicator
- Set-up and Diagnostic Menu
- NO/NC Alert Contact Output

Tilted 5" easy fill access on front of tank

DMF150 (4.5 USG) or DMF300 (19 USG) tank for storage and mixing of system make-up fluid

Translucent reservoir provides visual notice that system may have developed a leak and mitigates potential for flooding disaster



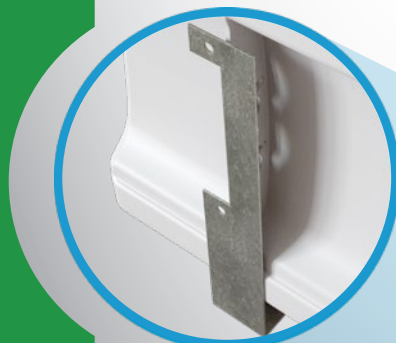
**NEW**



**DMF300**



**DMF150**



Integrated easy connect wall bracket

# System Feeders



## DIGITAL MINI SYSTEM FEEDERS



Axiom System Feeders are designed to simplify the process of maintaining the cold static fluid pressure in closed-loop heating and cooling systems. Having a reservoir of suitable make-up fluid eliminates the need for backflow prevention and helps solve many of the associated problems when using domestic water as a make-up fluid.

### APPLICATIONS:

System Feeders are ideal for boiler/chiller systems, snow/ice melt circuits, outside air heating/cooling glycol coils, geothermal and solar heating systems.

### Features and Benefits

- Automatically maintains a minimum system pressure at a user defined setting
- Feeders are compatible with both water and glycol/water solutions
- Provides leak detection - dropping fluid level provides immediate notice that the system is losing fluid
- Prevents major floods - in the event of a system rupture, only the contents of the tank will be pumped into the system
- All units plug into any standard 115 VAC outlet
- Diverter valve allows easy purging of air on air on initial start-up and manual mixing of fluid in the tank
- Fluid drained for service from the system can easily be recovered to the tank
- Fluid level switch shuts the pump off if the storage tank level gets too low

Model	System Volume	Fill Pressure
DMF150	Below 285 L (75 US Gal)	0-310 kPa (0-45 psig)
DMF300	285-1135 L (75-300 US Gal)	0-310 kPa (0-45 psig)

## MINI SYSTEM FEEDERS



Model	System Volume	Fill Pressure
MF200	Below 285 L (75 US Gal)	69-170 kPa (10-25 psig)

## SYSTEM FEEDERS

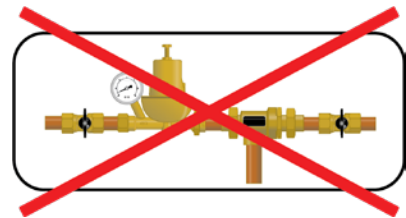


Model	System Volume	Fill Pressure
SF100	1135-3030 L (300-800 US Gal)	35-380 kPa (5-55 psig)
SF100-L	Above 3030 L (800 US Gal)	35-380 kPa (5-55 psig)
SF100-HP	1135-3030 L (300-800 US Gal)	170-585 kPa (25-85 psig)

**THIS**



**REPLACES THIS**



### SF100 Specialty Build Options:

- L-HP (100 USG, 25-85 PSI)
- 2PRV (Unit Designed for 2 systems)
- 2PRV-L (100 USG, 2 Systems)
- 2PRV-HP (25-85 PSI, 2 Systems)
- UHP (35-125 PSI)
- UHP-L (100 USG, 35-125 PSI)
- D (Dual Pump)
- D-2PRV (Dual Pump, 2 Systems)
- D-P (Dual Pump, Alternating Control Panel)

Custom units available upon request

